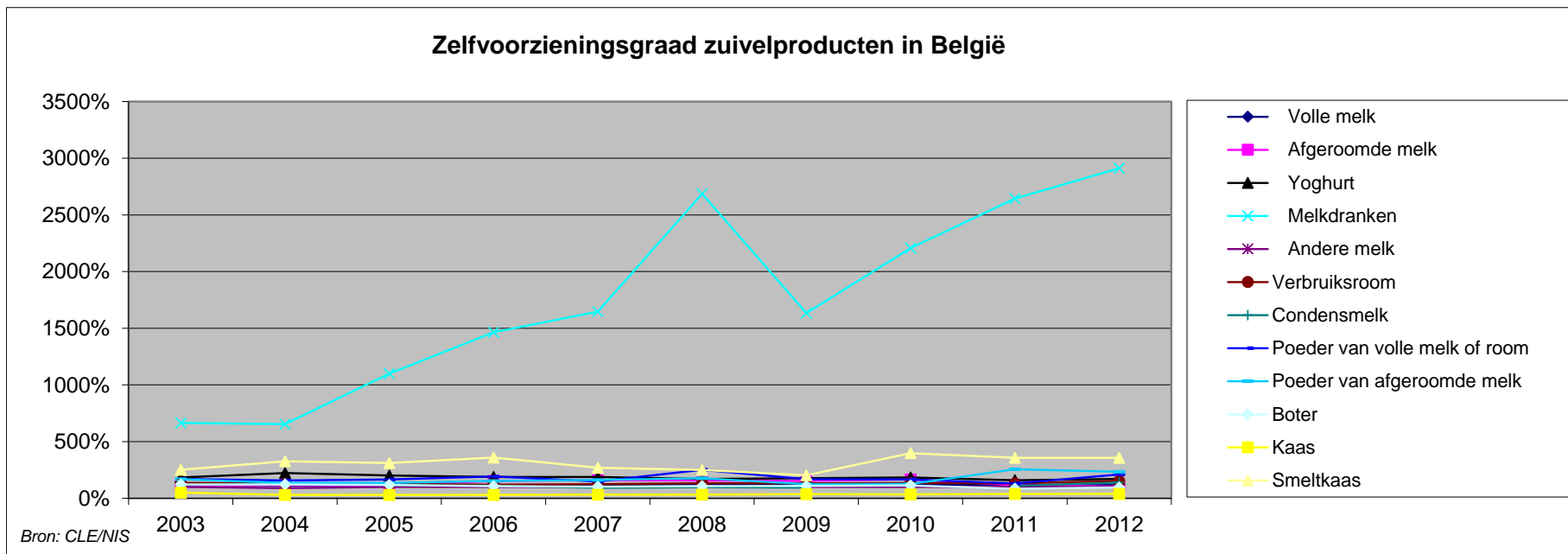


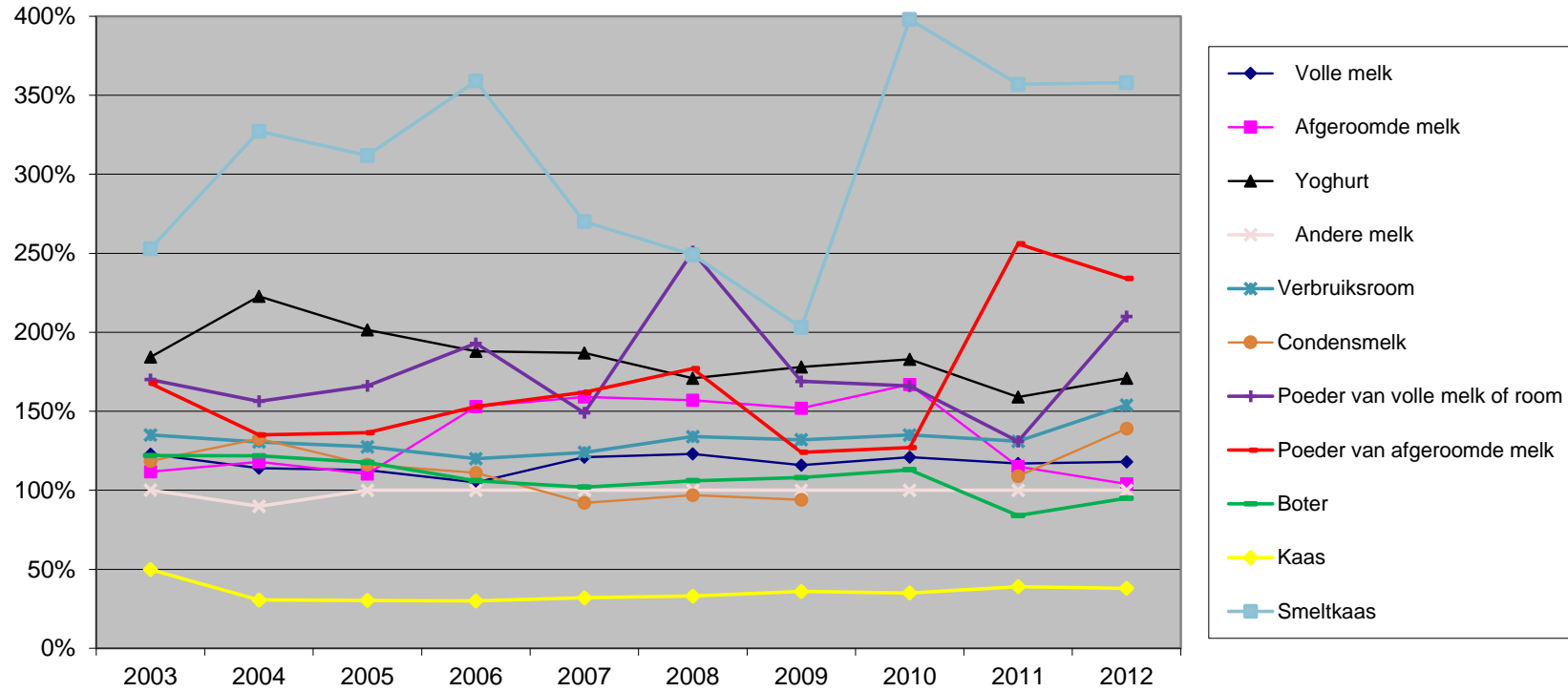
Zelfvoorzieningsgraad van zuivelproducten in België

	2003	2004	2005	2006	2007	2008	2009	2010	2011	2012
Verse vloeibare melkproducten	144%	144%	142%	132%	150%	149%	143%	147%	138%	145%
Volle melk	123%	114%	113%	105%	121%	123%	116%	121%	117%	118%
Afgeroomde melk	112%	118%	110%	153%	159%	157%	152%	167%	115%	104%
Yoghurt	184%	223%	202%	188%	187%	171%	178%	183%	159%	171%
Melkdranken	664%	654%	1101%	1464%	1647%	2686%	1633%	2207%	2644%	2912%
Andere melk	100%	90%	100%	100%	100%	100%	100%	100%	100%	100%
Verbruiksroom	135%	131%	128%	120%	124%	134%	132%	135%	131%	154%
Condensmelk	119%	133%	116%	111%	92%	97%	94%		109%	139%
Poeder van volle melk of room	170%	156%	166%	193%	149%	251%	169%	166%	131%	210%
Poeder van afgeroomde melk	168%	135%	136%	153%	162%	177%	124%	127%	256%	234%
Boter	122%	122%	118%	106%	102%	106%	108%	113%	84%	95%
Kaas	50%	31%	30%	30%	32%	33%	36%	35%	39%	38%
Smeltkaas	253%	327%	312%	359%	270%	249%	203%	398%	357%	358%

Bron: CLE, NIS



Zelfvoorzieningsgraad zuivelproducten in België (excl melkdranken)



Bron: CLE/NIS